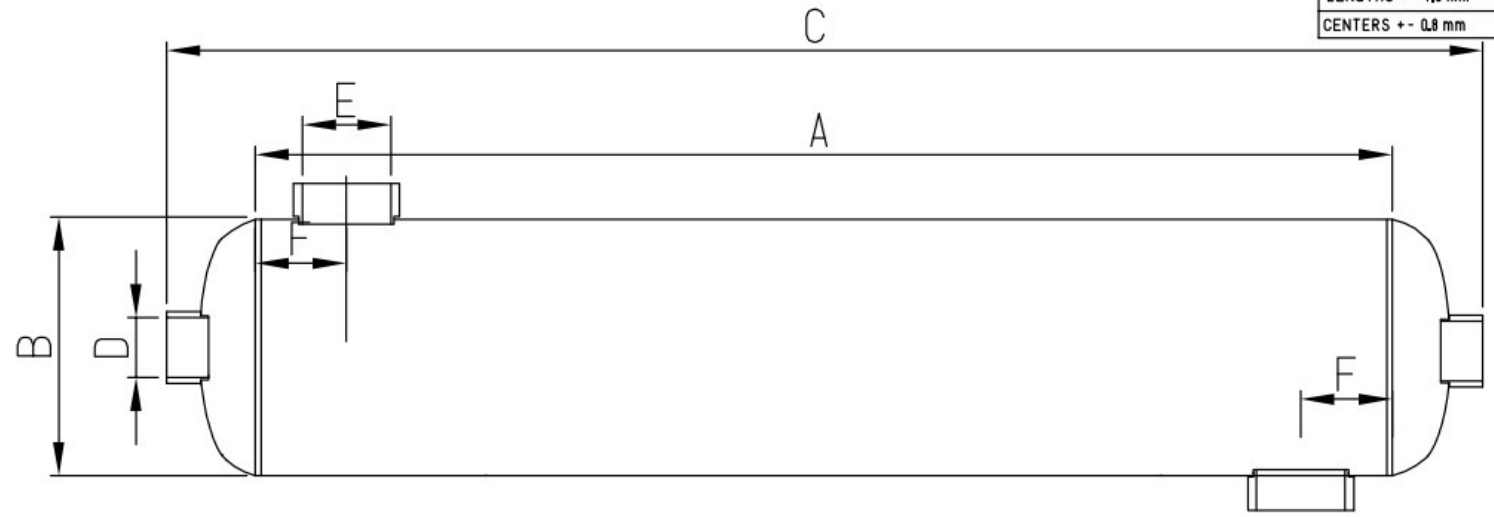
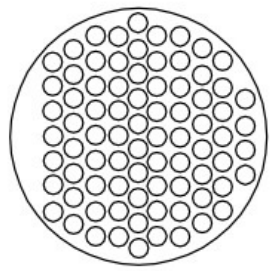


Part	Service
3A	Inlet nozzle
3B	Outlet nozzle
4A	Inlet nozzle
4B	Outlet nozzle

TOLERANCES
LENGTHS +- 1,5 mm
CENTERS +- 0,8 mm



SPECIFICATION OF POOL HEAT EXCHANGERS							
Model #	Area (M2)	A	B	C	D	E	F
SP - 55K	0,152	260	60	360	3/4"	1"	48
SP - 85K	0,251	420	60	520	3/4"	1"	48
SP - 155K	0,33	350	76	450	1"	1 1/2"	48
SP - 210K	0,443	470	76	570	1 1/2"	1 1/2"	48
SP - 300K	0,641	680	76	780	1 1/2"	2"	48
SP - 360K	0,848	730	89	830	1 1/2"	2"	48
SP - 600K	1,551	760	114	900	2"	2 1/2"	48
SP - 1200K	2,005	760	133	900	2"	2 1/2"	48
SP - 2400K	4,47	800	168	950	2"	4"	100
SP - 3000K	5,3	950	168	1100	2 1/2"	4"	100
SP - 3600K	6,42	1150	168	1300	2 1/2"	4"	100
SP - 4500K	8,46	900	219	1070	2 1/2"	4"	100
SP - 5000K	8,87	1000	219	1170	2 1/2"	4"	100
SP - 6000K	10,64	1200	219	1370	2 1/2"	4"	100

Pool & Spa Heat Exchanger			
NOTE**	SHELL SIDE	TUBE SIDE	
Maximum Allowable Working Pressure: MPa	1,31	1,31	
Maximum Allow. Ext. Working Press.: MPa	N/A	11,64	
Minimum Design Metal Temperature: °C	-8	-8	
Maximum Design Temperature: °C	208	208	
Pneumatic Test Pressure: MPa	2,0	2,0	
Medium	Water	Water	
STAMPING	NO REQUIRED	NONDESTRUCTIVE EXAM,	
PWHT	NO	RT	NO
CORR. ALLOWANCE	0,01	PT	YES, UW - 50
IMPACT TEST	SEE NOTE *	MT	NO
VESSEL SERVICE	NO LETHAL	UT	NO

2	N	TUBING BWG 22	Stainless 316L
1	I	SHELL PLATE BWG 17	Stainless 316L
EL.	QTY	PART. NO.	MAT. DRAWING
0	JUN. 24. 2010	NONE	00000 000/00
REV. NO.	DATE	REVISION NUMBER & EXPLANATION	SERIAL NUMBER
		ASSEMBLY POOL & SPA HEAT EXCHANGER	Lb
		ITEM	WEIGHT
			REVISION
			CUSTOMER NAME:
APPROVED & PREPARED		DRAWING No. ABDSP-316L	N/A 1/1
VESSEL CODE			SCALE SHEET
DES. YES OR NO			APPROVED
CUSTOMER			LANDMARKS
			INCHES/MILLIMETERS